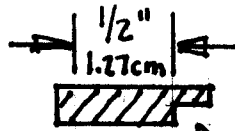
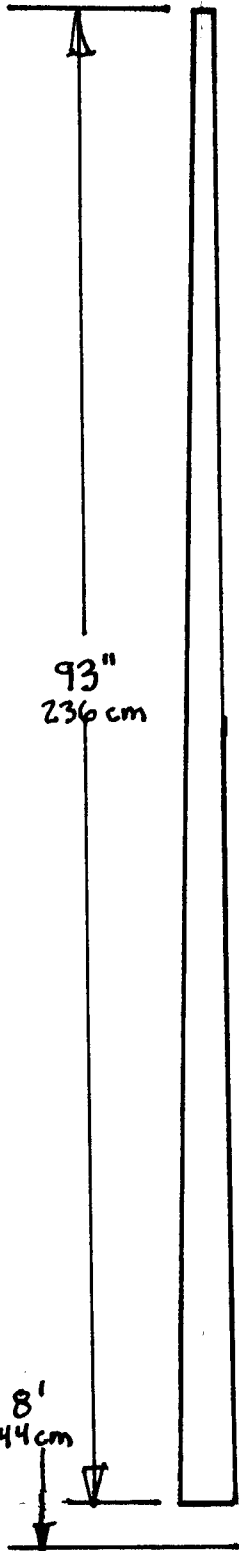


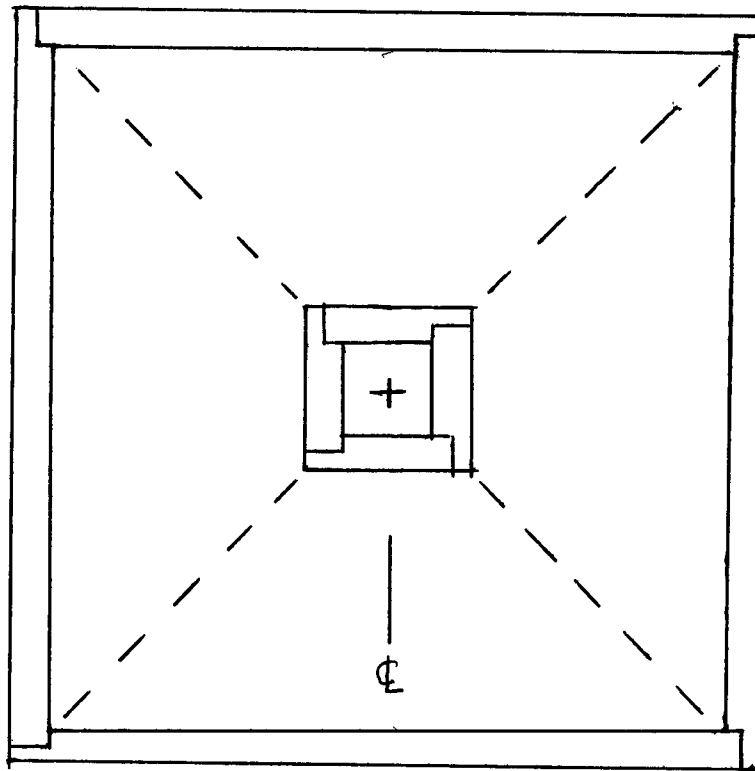
TRAPEZOID  
(TYPICAL 1 OF 4)  
SCALE  $\approx 1" = 1'$



RABBET CUT

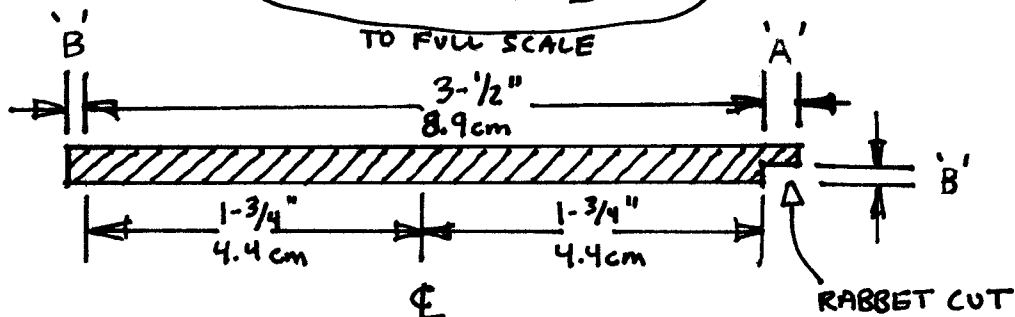
DETAIL OF TRAPEZOID  
AT SMALL END  
TO FULL SCALE

TYPICAL  
RABBET  
JOINT



DETAIL OF  
ASSEMBLED  
TRAPEZOIDS  
-  
AS VIEWED  
FROM LARGE  
"BELL" END  
-  
SMALL END  
SHOWN WITH  
OUTER EDGE  
VISIBLE

DETAIL OF TRAPEZOID  
AT LARGE END  
TO FULL SCALE



'A' = PLYWOOD THICKNESS  
'B' = HALF PLYWOOD THICKNESS